

Host Sheet

This is a game where party guests are given handouts with terrible outdated clip art images on them. Some of the images refer to a movie title specifically, while the other images refer to things associated with the movie. The challenge for the guests is to figure out which horror movie the clues are referring to.

Game Play: can compete individually or as teams. Each one needs a copy of the 8 sheets. The first person or team to have them all correct (or the most correct answers once time is up) wins.

Sheet 1:

Clue #1 - *Reference* - fava beans, a liver, Chianti. Answer - **Silence of the Lambs**

Clue #2 - *Title* - American flag, werewolf, Big Ben. Answer - **American Werewolf in London**

Clue #3 - *Title* - children, corn. Answer - **Children of the Corn**

Sheet 2:

Clue #4 - *Reference* - tombstone with the name "Cage", kitty. Answer - **Pet Cemetery**

Clue #5 - *Title* - A gate multiplied by 9. Answer - **The Ninth Gate**

Clue #6 - *Title* - spider, book on phobias. Answer - **Arachnophobia**

Sheet 3:

Clue #7 - *Reference* - Ferris wheel, Chinese food container, bats. Answer - **Lost Boys**

Clue #8 - *Reference* - corsage, a cross, a pig. Answer - **Carrie**

Clue #9 - *Title* - ginger, snapping a finger. Answer - **Gingersnaps**

Sheet 4:

Clue #10 - *Reference* - phone with a tongue, fedora. Answer - **Nightmare on Elm St**

Clue #11 - *Reference* - axe, red rum, a typewriter. Answer - **The Shining**

Clue #12 - *Reference* - Easter Bunny, Santa's hat. Answer - **Nightmare Before Christmas**

Sheet 5:

Clue #13 - *Title* - Army recruitment poster. Answer - **Army of Darkness**

Clue #14 - *Reference* - female devil, a bible, a staircase. Answer - **The Exorcist**

Clue #15 - *Reference* - a horse, a television, a well. Answer - **The Ring**

Sheet 6:

Clue #16 - *Reference* - a knife, showerhead. Answer - **Psycho**

Clue #17 - *Title* - 28th day circled on a calendar. Answer - **28 Days Later**

Clue #18 - *Title* - actual picture from the movie. Answer - **Freaks**

Clue #19 - *Title* - the world with an x marked under it. Answer - **Underworld**

Sheet 7:

Clue #20 - *Title* - rosemary, a baby. Answer - **Rosemary's Baby**

Clue #21 - *Reference* - a tree, a clown, a steak. Answer - **Poltergeist**

Clue #22 - *Reference* - a videotape, a phone, a garage door. Answer - **Scream**

Clue #23 - *Reference* - a bathtub, a ball bouncing downstairs, a wheelchair. Answer - **The Changeling**

Sheet 8:

Clue #24 - *Reference* - hooded figure, a forest. Answer - **The Village**

Clue #25 - *Reference* - cemetery, someone at the therapist's, monster. Answer - **Nightbreed**

Clue #26 - *Reference* - noose, tricycle, boy who needs a nanny. Answer - **The Omen**.

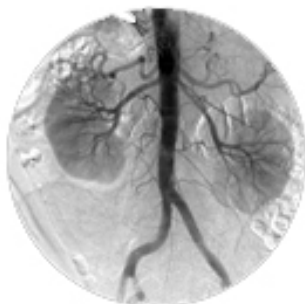


[Creative Commons Attribution-Noncommercial-Share Alike 3.0 Unported License](http://creativecommons.org/licenses/by-nc-sa/3.0/)

Visit <http://creativecommons.org/licenses/by-nc-sa/3.0/> to learn more.

This game is courtesy of Ghoul Friday at www.ghoulfriday.com

1.



2.



3.



4.

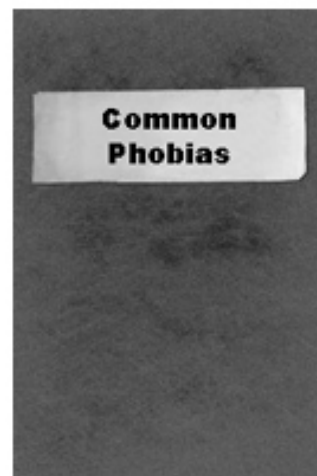


5.



x9

6.



7.



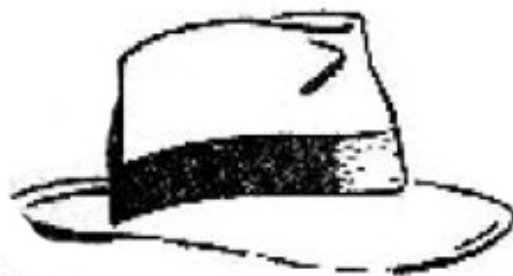
8.



9.



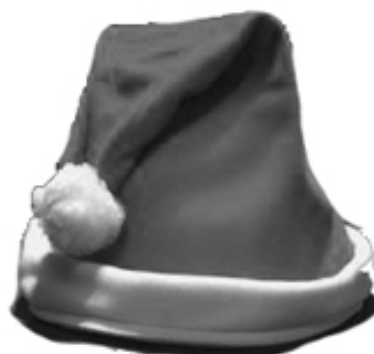
10.



11.



12.



13



14



15



16.



17.

[Redacted]						
<i>Sun</i>	<i>Mon</i>	<i>Tue</i>	<i>Wed</i>	<i>Thu</i>	<i>Fri</i>	<i>Sat</i>
		1 now	2	3	4	5
6	7	8	9	10	11	12
13	14	15	16	17	18	19
20	21	22	23	24	25	26
27	28 28	29	30	31		

18.



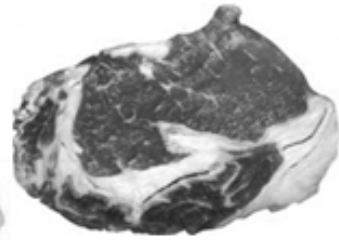
19.



20.



21.



22.



23.



24.



25.



26.

